

SIEGER

PARKING

Parking Simplified

SIEGER
PARKING
SPACES . SAFE . STANDARD

Your one stop solution for
all your parking needs



www.siegerparking.com



'Sieger Parking' is a company that designs, engineers, manufactures & sells multi-level Car Parking Systems worldwide. We, at Sieger Parking, believe in Limitless Innovation within Limited Space. If you are limited by space, we are here for you...

Your one stop solution for all your parking needs



Puzzle Parking



Stacker Parking



Tower Parking



2-Level Puzzle with PIT



Autocart Parking



Rotary Parking

SIECED PARKING



Puzzle Parking System

Limitless innovation with
Limited Space



Puzzle System is aimed for optimum use of space on ground. It is electro mechanically designed to go vertically up to 7 levels & horizontally to as much space available on ground.

Puzzle Systems is aimed for optimum use of space above ground. It is designed to go vertically up to 6 levels & horizontally to as much space available on ground.

Features

- Yellow Pipe Barrier
- Touch Screen Display
- Photo - Electric Sensor
- RE-PARK Logic
- Safety Lock
- Anti - Corrosive Platforms
- Anti - Slip Platform Design
- Provision to Connect to Master Controller



Projects



Puzzle System is aimed for optimum use of space on ground.



Puzzle System is aimed for optimum use of space on ground.



Puzzle System is aimed for optimum use of space on ground.



Puzzle System is aimed for optimum use of space on ground.



Scan to read more about our Puzzle parking system





Sieger Rotary Parking System

With almost 10 years' experience in the multi-level car parking industry, our rotary parking systems have been engineered and executed at the highest reliability and safety standards.

The Rotary Parking System works on a circulating mechanism very similar to a large giant wheel. Rotary parking is an excellent option where the space available is very limited. We can park up to 20 cars in 370 square feet.



Projects



Puzzle System is aimed for optimum use of space on ground.



Puzzle System is aimed for optimum use of space on ground.



Scan to read
more about our
Puzzle parking
system



Automated L-Cart Tower Parking system

Pit-Puzzle System is aimed for optimum use of space in basement type parking. It is hydraulically designed to go vertically upto 2 levels above ground and one level (PIT) below ground.

Features

Slow-Mo

Yellow Pipe Barrier

Touch Screen Display

Photo - Electric Sensor

RE-PARK Logic

Safety Lock

Anti - Corrosive Platforms

Anti - Slip Platform Design

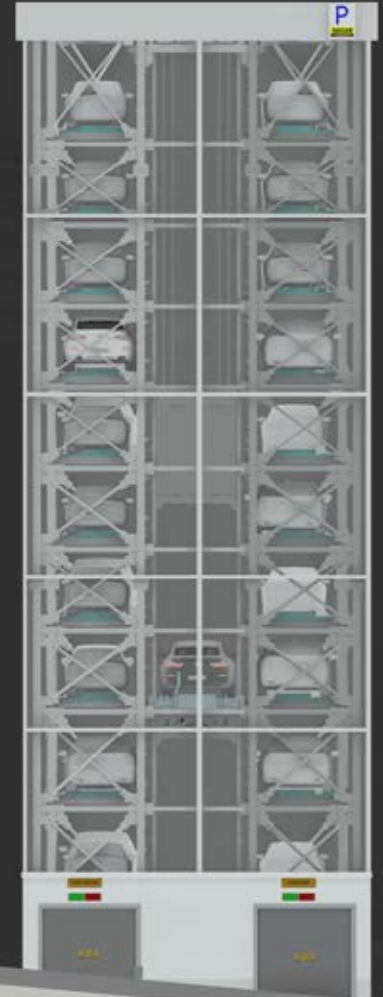


Projects

Puzzle System is aimed for optimum use of space on ground. It is electro mechanically designed to go vertically up to 7 levels & horizontally to as much space available on ground.



Scan to read
more about our
Pit Puzzle
parking system





Sieger Tower Parking System

It is an elevator parking system which has a highly efficient design made in a way to function vertically up and down in a limited area arranged in various levels. It is suitable for optimal use of space. Adversities faced due to space can be easily countered by using tower parking, these systems can be installed up to 70m above ground.



Features



Parking Management System with RF-ID integration



IOT connected with a mobile app control



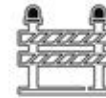
Precision motors and gearboxes for high reliability



Photoelectric sensor for interruption detection



Safety barrier / fencing to prevent children / external animals entering



Pipe barriers, Indication lamps and buzzers

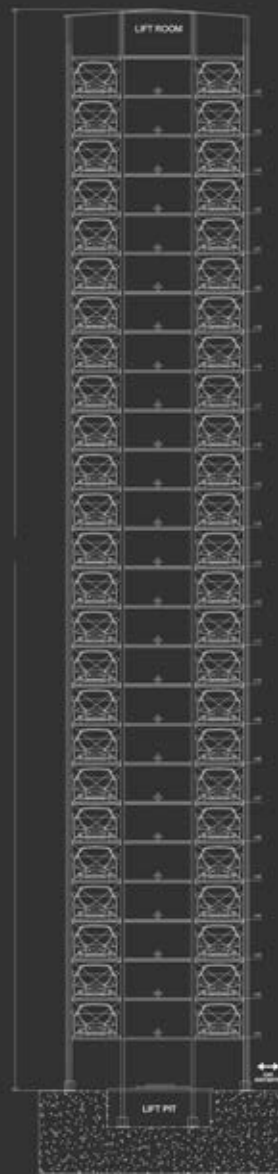
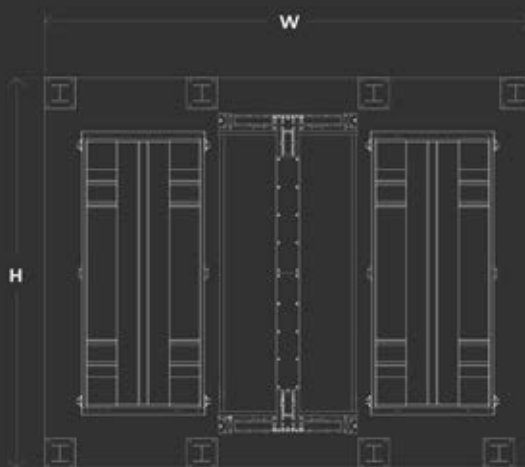


Single Deep Tower Parking System

This system is specifically designed to park vehicles vertically over a tall distance, all within a slim design. The Tower Parking System features a single entry and exit room that can be dedicated to any level on the tower. This transfer room is where the user leaves their vehicle for the system to then store it within the parking tower.

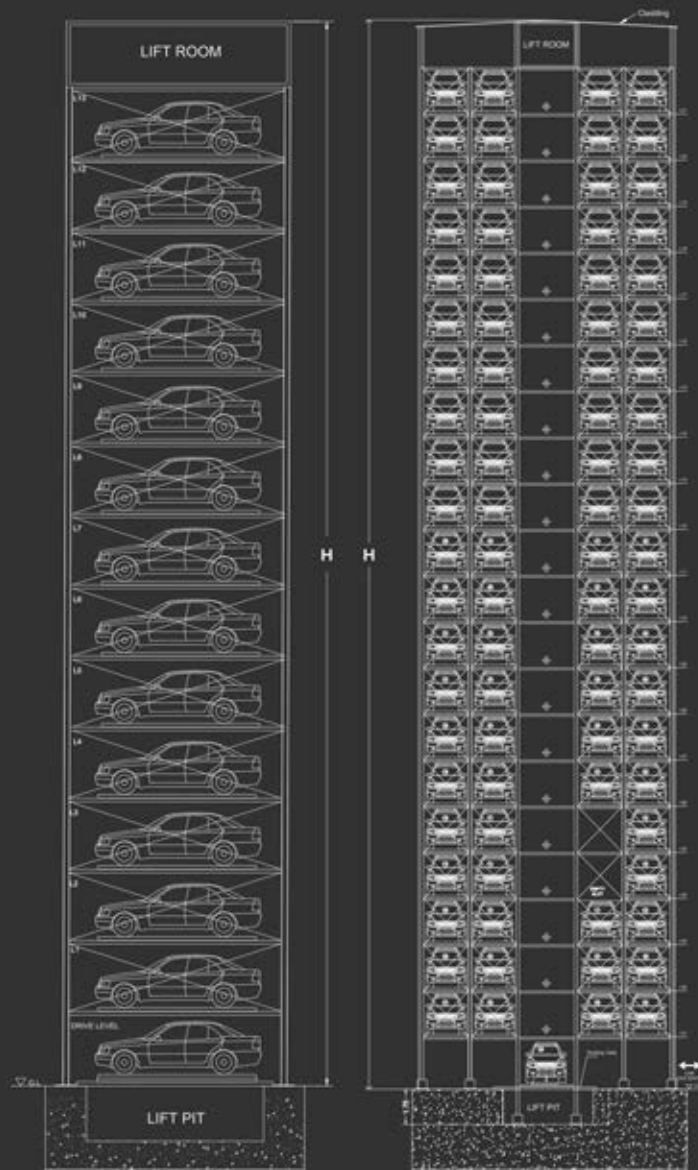
The Tower Car Parking System features a high-speed wire rope lift that can travel up to speeds greater than one meter per second, providing a fast parking and retrieval process. The wire ropes deliver smooth and quiet operation, and saves on energy with its counter weight design.

The Tower Car Parking System can be installed indoors or outdoors with optional facades. Single Deep and Double Deep Tower Parking variants can be used in narrow, linear spaces.



Single Deep Tower Parking System

Automated Double Deep Tower Parking system can be used in narrow spaces which can maximize the parking spaces. A high speed vertical lift is located in the transfer area. Each parking level can store 4 cars with one empty space in the entire system.





Sieger Autocart Parking System

It is an elevator parking system which has a highly efficient design made in a way to function vertically up and down in a limited area arranged in various levels. It is suitable for optimal use of space. Adversities faced due to space can be easily countered by using tower parking, these systems can be installed up to 70m above ground.



Scan to read more about our Puzzle parking system



Projects



Puzzle System is aimed for optimum use of space on ground.



Puzzle System is aimed for optimum use of space on ground.





Automated Comb Cart Parking system

Pit-Puzzle System is aimed for optimum use of space in basement type parking. It is hydraulically designed to go vertically upto 2 levels above ground and one level (PIT) below ground.



Features

- Slow-Mo
- Yellow Pipe Barrier
- Touch Screen Display
- Photo - Electric Sensor
- RE-PARK Logic
- Safety Lock
- Anti - Corrosive Platforms
- Anti - Slip Platform Design

www.siegerparking.com

Projects

Puzzle System is aimed for optimum use of space on ground. It is electro mechanically designed to go vertically up to 7 levels & horizontally to as much space available on ground.



Scan to read
more about our
Pit Puzzle
parking system





Sieger Pit Puzzle Parking System

Pit-Puzzle System is aimed for optimum use of space in basement type parking. It is hydraulically designed to go vertically upto 2 levels above ground and one level (PIT) below ground.

Features

- Slow-Mo
- Yellow Pipe Barrier
- Touch Screen Display
- Photo - Electric Sensor
- RE-PARK Logic
- Safety Lock
- Anti - Corrosive Platforms
- Anti - Slip Platform Design



www.siegerparking.com

Projects

Puzzle System is aimed for optimum use of space on ground. It is electro mechanically designed to go vertically up to 7 levels & horizontally to as much space available on ground.



Scan to read more about our Pit Puzzle parking system



Sieger Stack Parking System



Stackers are aimed to double the parking space above ground / basement type parking.

Features

Yellow Pipe Barrier

Cross Beam Vehicle Sensor

Slow-Mo

Indication Lamps and Buzzers



Scan to read
more about our
Stack parking
system

www.siegerparking.com

Sieger Fully automated parking system

Fully automated parking systems are the state-of-the-art in technology. They have horizontal carts in each level and a vertical lift which carries the car from the drive level to different floors.

Features

The system uses state-of-the-art servo drives and laser based guidance system. The typical parking time is less than 1 minute. Horizontal carts in each level optimizes the parking and retrieval time. Based on the parking frequency, additional car lifts can be provided to speedup parking and retrieval. The system is very modular to suit the space availability at site.



SIEGER

P A R K I N G

Parking Simplified

'Sieger Parking' is a company that designs, engineers, manufactures & sells multi-level Car Parking Systems worldwide.

We, at Sieger Parking, believe in Limitless Innovation within Limited Space. If you are limited by space, we are here for you...

We have always treated design and technology innovation equally, so we can integrate them organically in our thoughts, efforts and processes which have been our point of difference. We strive hard to create something that is conceptually interesting and visually stunning.

The technology that has gone into the system is a strong and proven Australian Technology, which was built through years of extensive research clubbed with creative engineering. This has translated into a successful initiative with Sieger Parking to build world-class parking systems.

Sieger Parking is headquartered in the industrious city of Coimbatore. It is a part of Sieger Spintech Equipments Pvt. Ltd. who have been in the business of Textile Automation for over 2 decades. A brand to reckon in the textile automation industry domain.

Sieger has over 2 decades of engineering expertise with a Pan India presence World Class Manufacturing facility inline with a professionally managed set-up Pan India marketing & service network built over the past decade In-depth experience in erecting & servicing machines & automation systems Machines manufactured & produced by Sieger work 24/7 worldwide.

O U R C L I E N T S





With over 25 years of experience in manufacturing textile machinery, we at Sieger have diversified into end to end automation solutions. Our entire portfolio of business moves towards finding and providing a solution which will yield direct profits to our customers.



Our components are manufactured with utmost accuracy for many critical applications in our world-class 15000 square meter design and manufacturing facility

State of the art advanced conveyorised powder coating system



High precision CNC machines for enhanced quality and productivity

Industry 4.0 and Digital factory at work.

Complete Digitalization of our Shop Floor with E-Drawings and QR coded Components for process control



M A N U F A C T U R I N G A T S I E G E R



SIEGER

P A R K I N G

Parking Simplified

Your one stop solution for
all your parking needs

SIEGER SPINTECH EQUIPMENTS PVT LTD

SF No. 49, Annur Road, Arasur Post,
Coimbatore - 641 407, Tamil Nadu, India



1-800-833-0245 | 91 98947 51798



info@siegerparking.com